

SYMBOLS

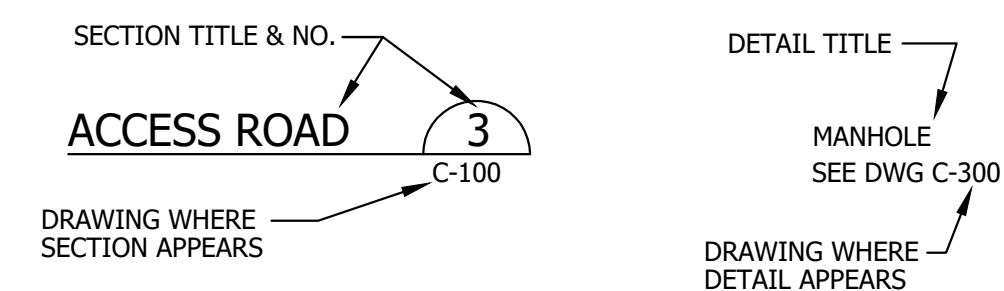
EXISTING	PROPOSED	EXISTING	PROPOSED	EXISTING	PROPOSED
	NORTH ARROW (TRUE)		DRAINAGE COURSE (WITH DIRECTION)		UNDERGROUND GAS MAIN
	NORTH ARROW (MAGNETIC)		EDGE OF WATER		UNDERGROUND TELEPHONE LINE
	NORTH ARROW (PLAN NORTH)		WATER ELEVATION (GROUND OR SURFACE)		UNDERGROUND ELECTRICAL LINE
	CONTOUR LINES		FENCE LINE (WOOD)		OVERHEAD ELECTRICAL LINE
	SPOT ELEVATION (INVERT ELEVATION)		FENCE LINE (WIRE)		OVERHEAD TELEPHONE LINE
	EXISTING GROUND		STONE WALL		SANITARY SEWER
	SURVEY BASELINE WITH TRIANGULATION OR INTERSECTION PT.		RETAINING WALL		FORCE MAIN
	PROPERTY LINE OR R.O.W.		GUARD RAIL		WATER MAIN
	PROPERTY LINE W/ BEARING AND DISTANCE		BUILDING AND STRUCTURES		STORM DRAIN
	CELL DESIGNATION		SLOPE RATIO (HORIZONTAL TO VERTICAL)		UNDERDRAIN
	BOUNDARY LINE (State, County, Municipality)		SLOPES (WITH SLOPE RATIO)		LANDFILL GAS
	SURVEY MONUMENT		EDGE OF ROAD		LEACHATE TRANSPORT
	SURVEY CONTROL		CUT OR FILL LINE		LEACHATE COLLECTION
	PROPERTY PIN, DRILL HOLE, PK, OR STAKE		GRAVEL ACCESS ROAD		LEAK DETECTION
	WOODS OR BRUSH LINE		CONCRETE		GAS COLLECTION
	INDIVIDUAL TREE		TEST BORING, MONITORING WELL, OR PIEZOMETER AND NUMBER		GAS TRANSPORT
	WETLAND DELINEATED		TEST PIT AND NUMBER		REDUCER
	WETLAND PHOTO INTERPRETED		SURFACE WATER SAMPLE LOCATION		MECHANICAL CAP OR PLUG
	WETLAND TO BE IMPACTED		GAS EXTRACTION WELL		COUPLING
	GAS VENT		GAS CONDENSATE TRAP		BEND
	GAS VENT (CAPPED)		GAS FLARE		TEE
	CLEAN OUT STRUCTURE		MANHOLE		PIPE TO BE ABANDONED
	SAMPLE SUMP		CATCH BASIN		RISER PIPE & INLET GRATE
	CULVERT		WATER OR GAS VALVE		STORM GRATE
	SLOPE INCLINOMETER		HYDRANT		DRAINAGE INLET STRUCTURE
	VIBRATING WIRE SETTLEMENT CELL		AIR RELEASE VALVE		UNDERDRAIN SUMP
	VERTICAL/HORIZONTAL DISPLACEMENT MONUMENT		UTILITY POLE		SILTATION FENCE
	VERTICAL DISPLACEMENT MONUMENT		LIGHT POLE		LIMIT OF WORK LINE

GENERAL NOTES:

- BASE MAP PREPARED BY AERIAL SURVEY & PHOTO INC., NORRIDGEWOCK, MAINE. PHOTO DATE 10/22/2022, GROUND CONTROL PROVIDED BY THE CITY OF BATH, DATED OCTOBER 2017. HORIZONTAL DATUM: MAINE STATE COORDINATES, WEST ZONE, NAD 83. VERTICAL DATUM: NAVD 88.
- BENCHMARK: THE BATH LANDFILL PROJECT BENCHMARK: TOP OF 6" DIA CASING OF MW-401. EL. 103.00, NGVD 88.
- EXISTING TOPOGRAPHY SHOWN AT 2-FOOT INTERVALS AND REPRESENTS GRADES AT THE TIME OF THE SURVEY. STANDARD PRACTICE DICTATES THAT THE CONTRACTOR SHOULD FIELD VERIFY THE EXISTING CONDITIONS PRIOR TO CONSTRUCTION, AND LOCATIONS OF ALL UTILITIES AND EXISTING PIPING IN THE CONSTRUCTION AREA.
- THE CONTRACTOR SHALL COMPLY FULLY WITH THE CONDITIONS CONTAINED IN THE MEDEP "MAINE EROSION AND SEDIMENT CONTROL HANDBOOK FOR CONSTRUCTION: BEST MANAGEMENT PRACTICES 2016".
- THE CONTRACTOR AND ITS SUBCONTRACTORS SHALL ABIDE BY ALL SAFETY REQUIREMENTS ASSOCIATED WITH WORKING AT AN ACTIVE SOLID WASTE LANDFILL FACILITY (I.E., RISK OF WORKER EXPOSURE TO LANDFILL GASES, LEACHATE, SOLID WASTE) INCLUDING THE FOLLOWING:
 - THE EMPLOYEES OF THE CONTRACTOR AND HIS SUBCONTRACTOR SHALL COMPLY WITH ALL APPLICABLE SAFETY PROCEDURES UNDER THE OCCUPATIONAL SAFETY AND HEALTH ACT (OSHA) AND REGULATIONS ISSUED THEREUNDER AND STATE LABOR (SAFETY) DEPARTMENT AND MILL RULES, PROCEDURES, AND REGULATIONS REGARDING SAFETY;
 - COMPLY WITH ALL CITY OF BATH CONSTRUCTION OPERATIONAL SAFETY REQUIREMENTS, INCLUDING USE OF HARD HATS, SAFETY GLASSES, AND FLUORESCENT SAFETY VESTS AT ALL TIMES;
 - FOLLOW CONFINED SPACE ENTRY RULES ESTABLISHED BY OSHA FOR ALL CONFINED SPACES, INCLUDING, BUT NOT LIMITED TO, MANHOLES, CATCH BASINS, PUMP STATIONS, TEST PITS, TRENCHES, ETC.; AND
 - ALL EQUIPMENT USED ON SITE SHALL BE EQUIPPED WITH BACK-UP WARNING LIGHTS AND AUDIBLE INDICATOR.
- THE CONTRACTOR SHALL TAKE EVERY PRECAUTION TO ENSURE THAT NO SILTATION OF STORMWATER DRAINAGE COURSES OCCURS AS A RESULT OF SOIL DISTURBANCE ASSOCIATED WITH THE CONTRACT SCOPE OF WORK.
- THE CONTRACTOR SHALL BE RESPONSIBLE FOR PROVIDING COMPLETE PROTECTION OF THE PROJECT DURING CONSTRUCTION FROM ANY ACTS OF NATURE OR MAN, SUCH AS, BUT NOT LIMITED TO, FLOODS, WIND DAMAGE, EARTH SLIDES, AND SLOPE FAILURES. DAMAGE TO THE PROJECT CAUSED BY SUCH ACTS WILL NOT BE SUFFICIENT CAUSE TO INCREASE CONTRACT COSTS TO THE OWNER.
- THE CONTRACTOR SHALL PROTECT EXISTING ON-SITE STRUCTURES FROM DAMAGE DURING CONSTRUCTION, INCLUDING: MONITORING WELLS, POWER LINES, MAINTENANCE FACILITIES, PHASES I AND II COVER AND EXISTING LEACHATE COLLECTION AND TRANSPORT SYSTEMS, ETC. THE CONTRACTOR SHALL BE RESPONSIBLE FOR ALL REPAIRS REQUIRED TO CORRECT DAMAGE MADE TO EXISTING ON-SITE STRUCTURES INCLUDING THOSE DESCRIBED ABOVE RESULTING FROM ANY CONSTRUCTION ACTIVITY.

ACMP ACP AC AGG ALUM APPD APPROX ARMH ASB ASP AUTO AUX AVE AZ	ASPHALT COATED CMP ASBESTOS CEMENT PIPE ACRE AGGREGATE ALUMINUM APPROVED APPROXIMATE AIR RELEASE MANHOLE ASBESTOS ASPHALT AUTOMATIC AUXILIARY AVENUE AZIMUTH	D DBL DEG OR ° DEGREE DEPT DI DIA OR Ø DIM DIST DN DR DWG	DEGREE OF CURVE DOUBLE DEGREE DEPARTMENT DUCTILE IRON DIAMETER DIMENSION DISTANCE DOWN DRAIN DRAWING	HDPE HORIZ HP HYD	HIGH DENSITY POLYETHYLENE HORSEPOWER HYDRANT	ID IN OR * INV INV EL	INSIDE DIAMETER INCHES INVERT DOWN INVERT ELEVATION	LB LC LD LF LOC LT	POUND LEACHATE COLLECTION LEAK DETECTION LINEAR FEET LOCATION LEACHATE TRANSPORT	MT MH MJ MATL MAX MFR MIN MISC MON	MANHOLE MECHANICAL JOINT MATERIAL MAXIMUM MANUFACTURE MINIMUM MISCELLANEOUS MONUMENT	NITC NTS N/F N/O OR #	NOT IN THIS CONTRACT NOT TO SCALE NOW OR FORMERLY NUMBER	OC OD	ON CENTER OUTSIDE DIAMETER
BCCMP BM BIT BLDG BOT BRG BV	BITUMINOUS COATED CMP BENCH MARK BITUMINOUS BUILDING BOTTOM BEARING BALL VALVE	EA EG ELEC EL ELB EOP EQUIP EST EXC EXIST	EACH EXISTING GROUND OR GRADE ELECTRIC ELEVATION ELBOW EDGE OF PAVEMENT EQUIPMENT ESTIMATED EXCAVATE EXISTING	FG FBRGL FDN FLEX FLG FLR FPS FT OR * FTG	FINISH GRADE FIBERGLASS FOUNDATION FLEXIBLE FLANGE FLOOR FEET PER SECOND FEET FOOTING	GA GAL GALV GPD GPH	GALGE GALLON GALVANIZED GALLONS PER DAY GALLONS PER MINUTE	PERF PP PSI PVC PVMT	PERFORATED POWER POLE POUNDS PER SQUARE INCH POLYVINYL CHLORIDE PAVEMENT	QTY	QUANTITY	RCP ROW RAD REQD RT RTE	REINFORCED CONCRETE PIPE RIGHT OF WAY RADIUS REQUIRED RIGHT ROUTE	S SCH SF SHT SMH ST STA SY	SLOPE SCHEDULE SQUARE FEET SHEET SANITARY MANHOLE STREET STATION SQUARE YARD
CB CEN CEM LIN CMP CO CF CFS CI CL CONC CONST CONTR CS CTR CU CY	CATCH BASIN CENTER CEMENT LINED CORRUGATED METAL PIPE CLEAN OUT CUBIC FEET CUBIC FEET PER SECOND CAST IRON CLASS CONCRETE CONSTRUCTION CONTRACTOR CURB STOP CENTER COPPER CUBIC YARD	GA GAL GALV GPD GPH	GALGE GALLON GALVANIZED GALLONS PER DAY GALLONS PER MINUTE	PC PD PI PIV PT	POINT OF CURVE PERIMETER DRAIN POINT OF INTERSECTION POST INDICATOR VALVE POINT OF TANGENT	TEMP TYP	TEMPORARY TYPICAL	UD V VA TEE VERT	UNDERDRAIN VOLTS VALVE ANCHORING TEE VERTICAL	TAN TDH TEMP TYP	TANGENT TOTAL DYNAMIC HEAD TEMPORARY TYPICAL	W/G W/O	WATER GATE WITH WITHOUT	YD	YARD

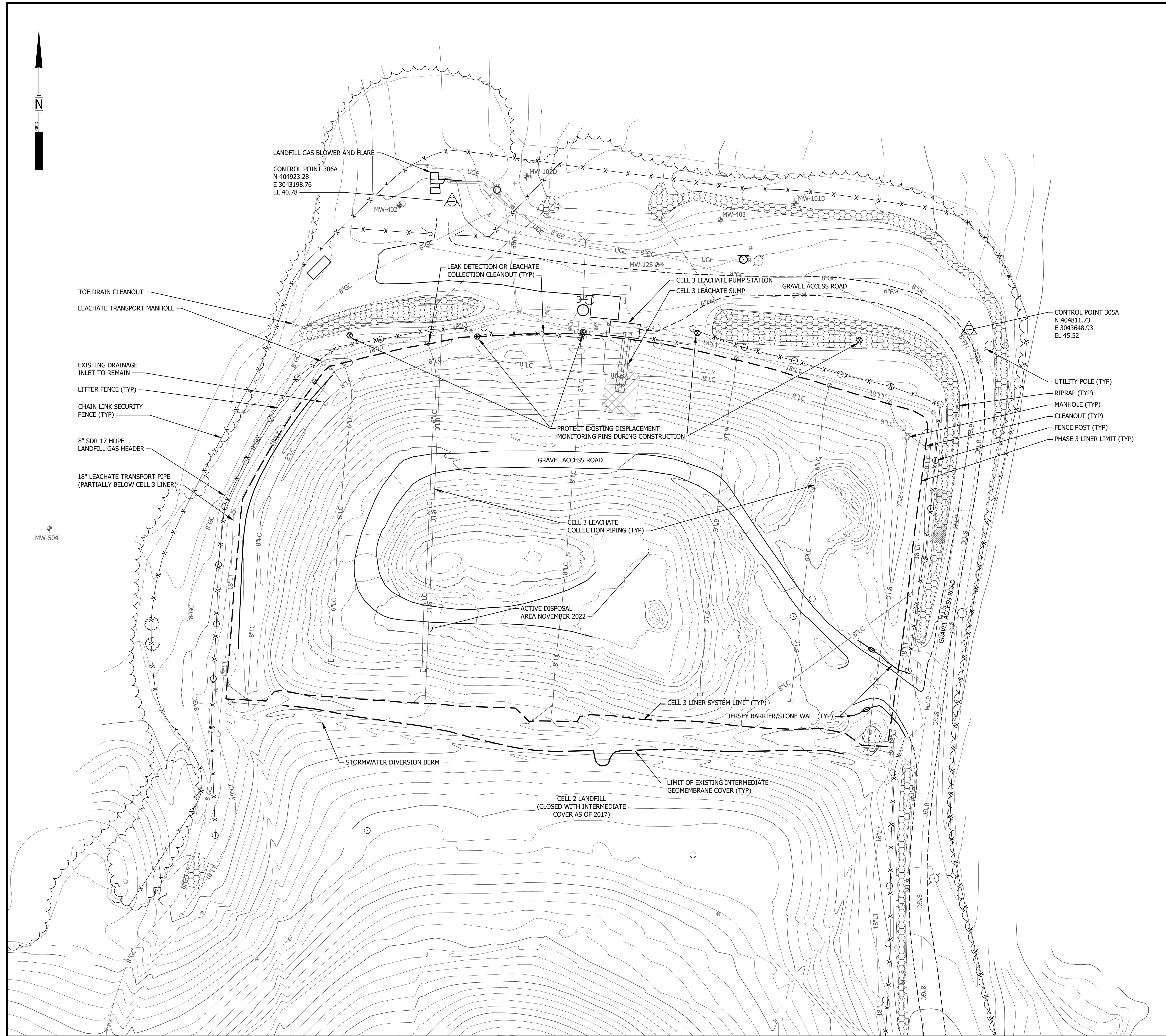
VIEW MARKERS & IDENTIFICATION



	BDP	2/2023	SUBMITTED TO MEDEP FOR REVIEW AND ISSUED FOR BID	
REV.	BY	DATE	STATUS	
			CITY OF BATH 2023 INTERMEDIATE COVER INSTALLATION BATH, MAINE	
SME SEVEE & MAHER ENGINEERS ENVIRONMENTAL • CIVIL • GEOTECHNICAL • WATER • COMPLIANCE 4 Blanchard Road, PO Box 85A, Cumberland, Maine 04021 Phone 207.829.5016 • Fax 207.829.5692 • sme-engineers.com			SYMBOLS & ABBREVIATIONS	
			DESIGN BY: NMT	
			DRAWN BY: JRL	
			DATE: 11/2022	
			CHECKED BY: BDP	
			LMN: LMN	
			CTB: SME-STD	
JOB NO. 21756		DWG FILE SYMSHT		C-100

NOTES:

1. SEE DRAWING C-100 FOR GENERAL SITE NOTES AND PLAN REFERENCES.
2. LANDFILL GAS (LFG) IS EXPLOSIVE AND MAY CONTAIN TOXIC CONSTITUENTS. LANDFILL GAS AT THIS SITE CONTAINS HYDROGEN SULFIDE. CONTRACTOR SHALL EMPLOY APPROPRIATE HEALTH & SAFETY TECHNIQUES TO COMPLY WITH FEDERAL, STATE AND LOCAL REGULATIONS AND TO LIMIT POTENTIAL HAZARDS.
3. THE CONTRACTOR IS ADVISED THAT THE LANDFILL WILL CONTINUE TO OPERATE DURING THE INSTALLATION OF THE HORIZONTAL LFG COLLECTION TRENCHES AND THE INTERMEDIATE COVER. THE CONTRACTOR SHALL COORDINATE WITH THE CITY LANDFILL STAFF REGARDING THE SEQUENCING OF CONSTRUCTION ACTIVITIES, THE MOVEMENT OF CONSTRUCTION VEHICLES, AND THE STORAGE AND STAGING OF EQUIPMENT AND SUPPLIES ASSOCIATED WITH THIS PROJECT.



REV.	BY	DATE	STATUS
	BDP	2/2023	SUBMITTED TO MEDEP FOR REVIEW AND ISSUED FOR BID

CITY OF BATH
2023 INTERMEDIATE COVER INSTALLATION
BATH, MAINE

EXISTING CONDITIONS

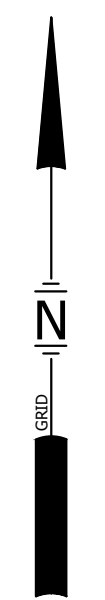
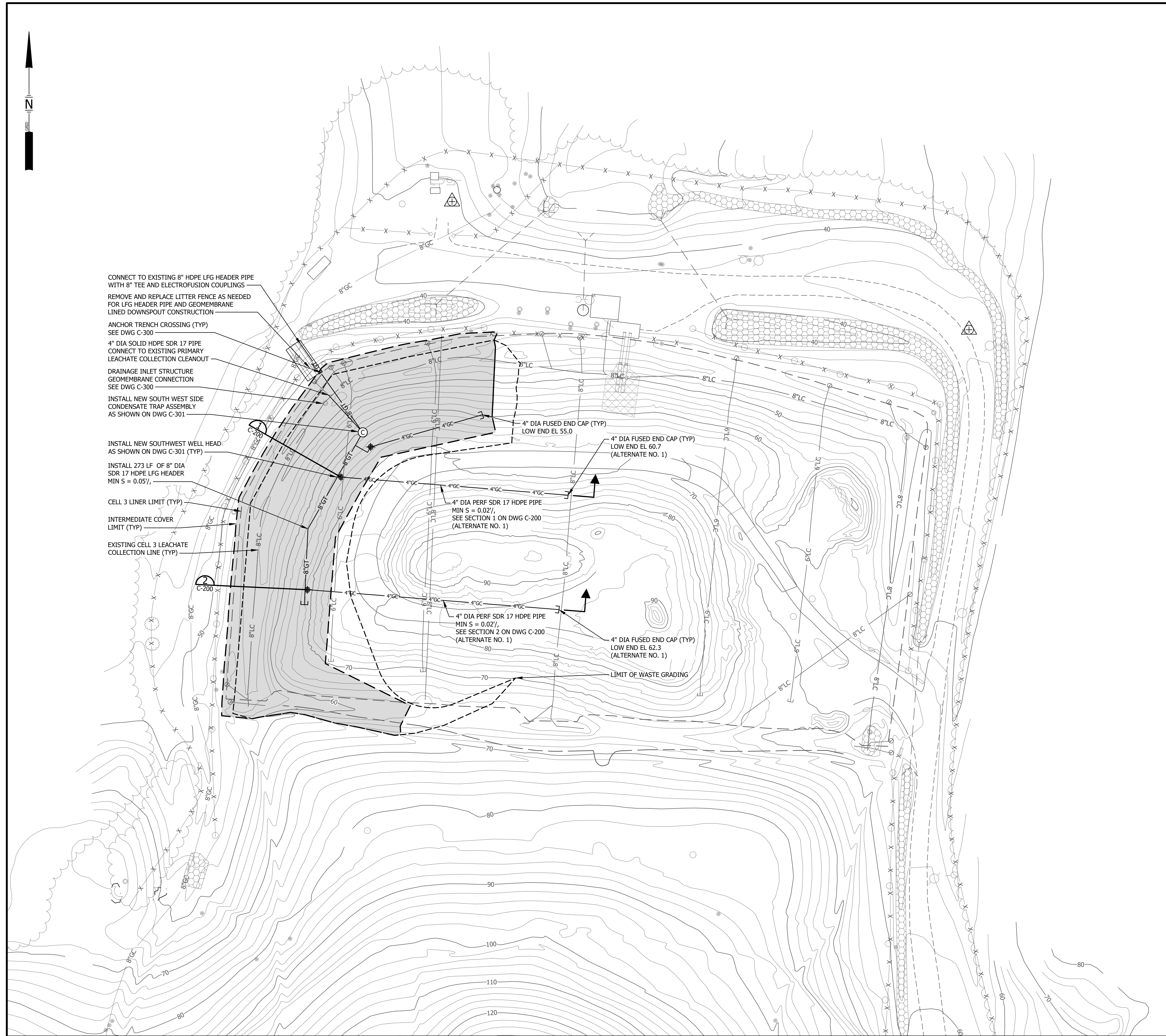
DESIGN BY: NMT
 DRAWN BY: JRL
 DATE: 9/2022
 CHECKED BY: BDP
 LMN: EXCON
 CTB: SME-STD

SME
 SEVEE & MAHER
 ENGINEERS

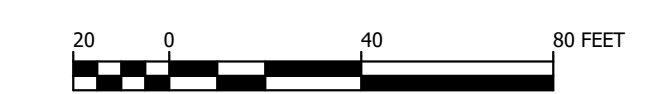
ENVIRONMENTAL • CIVIL • GEOTECHNICAL • WATER • COMPLIANCE
 4 Blanchard Road, PO Box 85A, Cumberland, Maine 04021
 Phone 207.829.5016 • Fax 207.829.5692 • sme-engineers.com

JOB NO. 21756 DWG FILE BASE

C-101



- NOTES:
- SEE DRAWING C-100 FOR GENERAL SITE NOTES AND PLAN REFERENCES.
 - THE CONTRACTOR WILL TAKE ALL NECESSARY PRECAUTIONS DURING CONSTRUCTION TO MINIMIZE THE DISTURBANCE OF ADJACENT AREAS AND TO PROTECT EXISTING UTILITIES, INCLUDING BUT NOT LIMITED TO GROUNDWATER MONITORING WELLS, PIEZOMETERS, UNDERDRAIN PIPING, GAS COLLECTION PIPING, SOIL GAS PROBES AND GAS VENTS/FLARES NOT DESIGNATED FOR REMOVAL. DAMAGE TO ANY ITEM OUTSIDE OF THE DEFINED LIMIT OF THE CONSTRUCTION AREA WILL BE REPAIRED AT THE CONTRACTOR'S EXPENSE.
 - INTERMEDIATE COVER WORK SHALL TAKE PLACE IN THE WEST AREA OR EAST AREA. THE CONTRACTOR SHALL PROVIDE ALL NECESSARY LABOR, MATERIALS AND EQUIPMENT TO PERFORM THE WORK.
 - COVER WORK SHALL INCLUDE ALL WORK WITHIN THE DEFINED LIMIT OF THE AREA INCLUDING INSTALLATION OF SURFACE WATER INLETS AND DRAINAGE PIPE AS SHOWN ON THE DRAWINGS, RELOCATION AND GRADING OF WASTE, CONSTRUCTION OF BERMS, CONSTRUCTION OF NEW ACCESS ROADS, PLACEMENT OF BEDDING LAYER BELOW INTERMEDIATE GEOMEMBRANE COVER AND INSTALLATION 30 MIL TEXTURED HDPE INTERMEDIATE COVER INCLUDING ANCHORING WITH ROPES, SANDBAGS AND TRENCHES.
 - DURING, AND IN CONJUNCTION WITH, THE INSTALLATION OF THE INTERMEDIATE COVER, THE CONTRACTOR SHALL MAKE SPOT REPAIRS TO THE EXISTING INTERMEDIATE COVER SYSTEM. SPOT REPAIRS MAY BE CONSIDERED INCIDENTAL TO THE INSTALLATION OF THE INTERMEDIATE COVER.
 - PERFORM WASTE GRADING PRIOR TO GAS SYSTEM CONSTRUCTION.



REV.	BY	DATE	STATUS
	BDP	2/2023	SUBMITTED TO MEDEP FOR REVIEW AND ISSUED FOR BID

CITY OF BATH
2023 INTERMEDIATE COVER INSTALLATION
BATH, MAINE

LANDFILL GAS COLLECTION SYSTEM PLAN

DESIGN BY: NMT
 DRAWN BY: JRL
 DATE: 9/2022
 CHECKED BY: BDP
 LMN: LFG
 CTB: SME-STD

SME
 SEVEE & MAHER
 ENGINEERS

ENVIRONMENTAL • CIVIL • GEOTECHNICAL • WATER • COMPLIANCE

4 Blanchard Road, PO Box 85A, Cumberland, Maine 04021
 Phone: 207.829.5016 • Fax: 207.829.5692 • sme-engineers.com

JOB NO. 21756

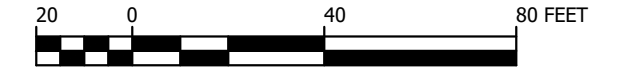
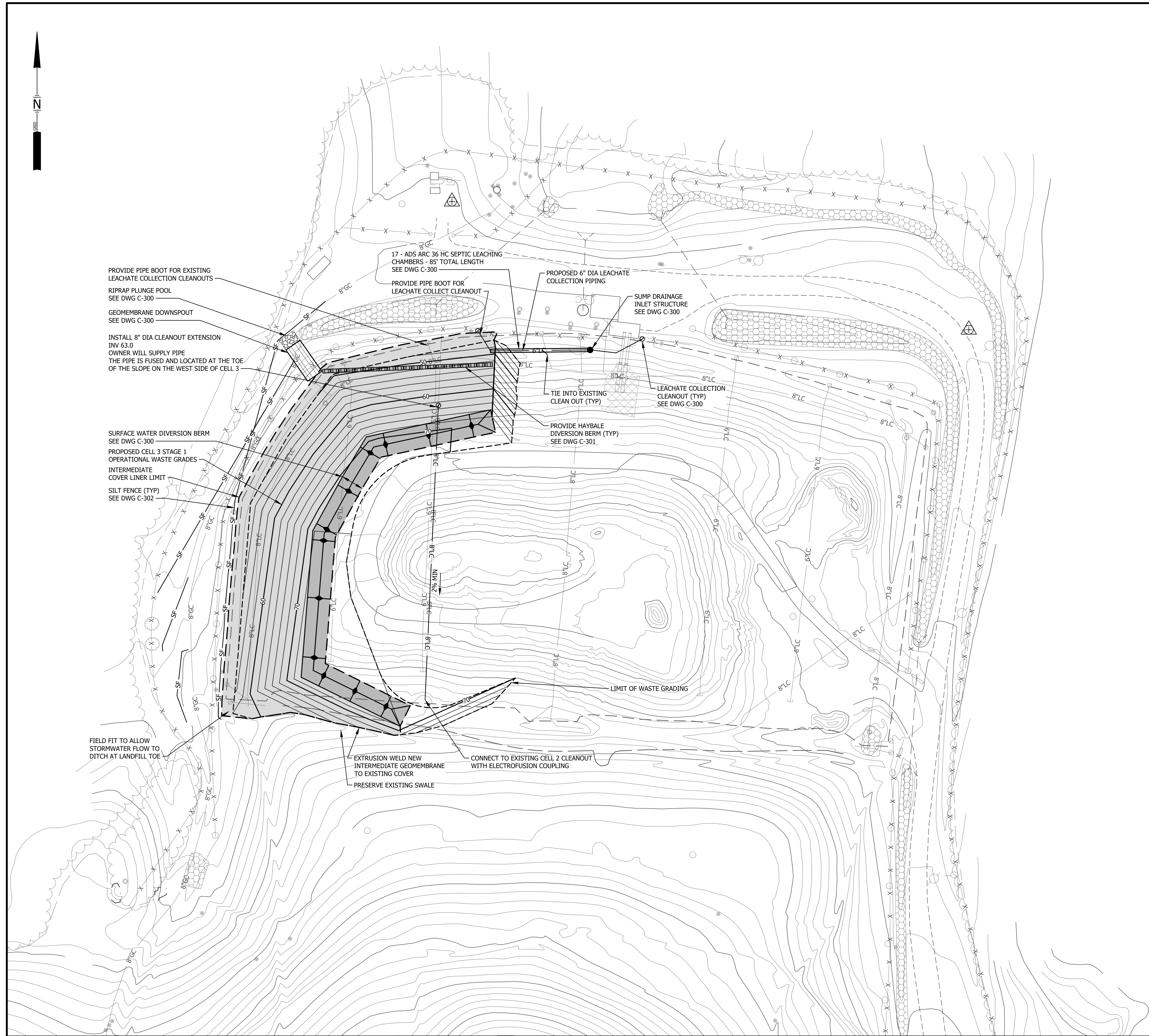
DWG FILE BASE

C-102



NOTES:

1. SEE DRAWING C-100 FOR GENERAL SITE NOTES AND PLAN REFERENCES.
2. COVER WORK SHALL INCLUDE ALL WORK WITHIN THE DEFINED LIMIT OF THE AREA INCLUDING INSTALLATION OF SURFACE WATER INLETS AND DRAINAGE PIPE AS SHOWN ON THE DRAWINGS, RELOCATION AND GRADING OF WASTE, CONSTRUCTION OF BERMS, PLACEMENT OF BEDDING LAYER BELOW INTERMEDIATE GEOMEMBRANE COVER, AND INSTALLATION 30 MIL TEXTURED HDPE INTERMEDIATE COVER INCLUDING ANCHORING.
3. DURING, AND IN CONJUNCTION WITH, THE INSTALLATION OF THE INTERMEDIATE COVER, THE CONTRACTOR SHALL MAKE SPOT REPAIRS TO THE EXISTING INTERMEDIATE COVER SYSTEM. SPOT REPAIRS MAY WILL BE CONSIDERED INCIDENTAL TO THE INSTALLATION OF THE INTERMEDIATE COVER.



REV.	BY	DATE	STATUS
	BDP	2/2023	SUBMITTED TO MEDEP FOR REVIEW AND ISSUED FOR BID

CITY OF BATH
2023 INTERMEDIATE COVER INSTALLATION
BATH, MAINE

SITE DEVELOPMENT PLAN - 2022

SME
SEVEE & MAHER
ENGINEERS

ENVIRONMENTAL • CIVIL • GEOTECHNICAL • WATER • COMPLIANCE
 4 Blanchard Road, PO Box 85A, Cumberland, Maine 04021
 Phone 207.829.5016 • Fax 207.829.5692 • sme-engineers.com

DESIGN BY: NMT
 DRAWN BY: JRL
 DATE: 9/2022
 CHECKED BY: BDP
 LMN: LFG
 CTB: SME-STD

JOB NO. 21756

DWG FILE BASE

C-103

