



BATH
MAINE *City of Ships*

PUBLIC WORKS DEPARTMENT

Lee Leiner, P.E.
Director of Public Works
lleiner@cityofbath.com

City of Bath

Front Elm Streetscape

Bid Addendum 1

To All Bidders:

In response to questions received at the pre-bid meeting held on October 10, 2024, please find attached edits and clarifications to the bid specifications.

Please acknowledge receipt of this addendum by completing the Acknowledgment of Bid Amendments form included in the bid book and including the signed form with your bid.

Bid submittal date remains Thursday, October 24, 2024, at 2:00 PM at the Bath City Clerk's Office.

Thank you.

Amendment No. 1

All Bidders shall make the following changes to the bid book:

Special Provision Section 105 – General Scope of Work (Limitations of Operations) – Delete all text in item 6 and replace with “The contractor shall not schedule or complete any work between November 15, 2024 and January 5, 2025. During the Heritage Days event (July 3 through July 6, 2025) the Contractor shall not schedule or complete any work, and shall ensure the site is safe for public use”.

The following questions were received at the Pre-Bid meeting held Thursday, October 10th:

Question: Is there any additional information on the underground Consolidated Communications ducts on Front Street.

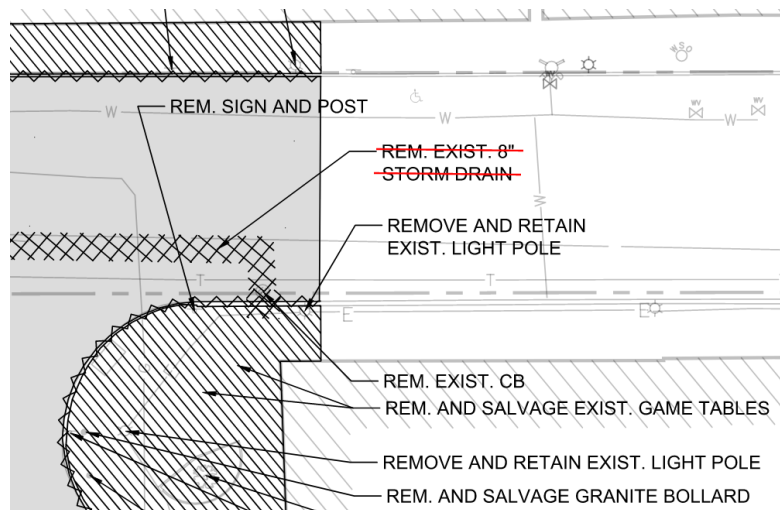
Response: Yes. See attached documentation.

Question: Which curbing does the pay item 609.112 relate to?

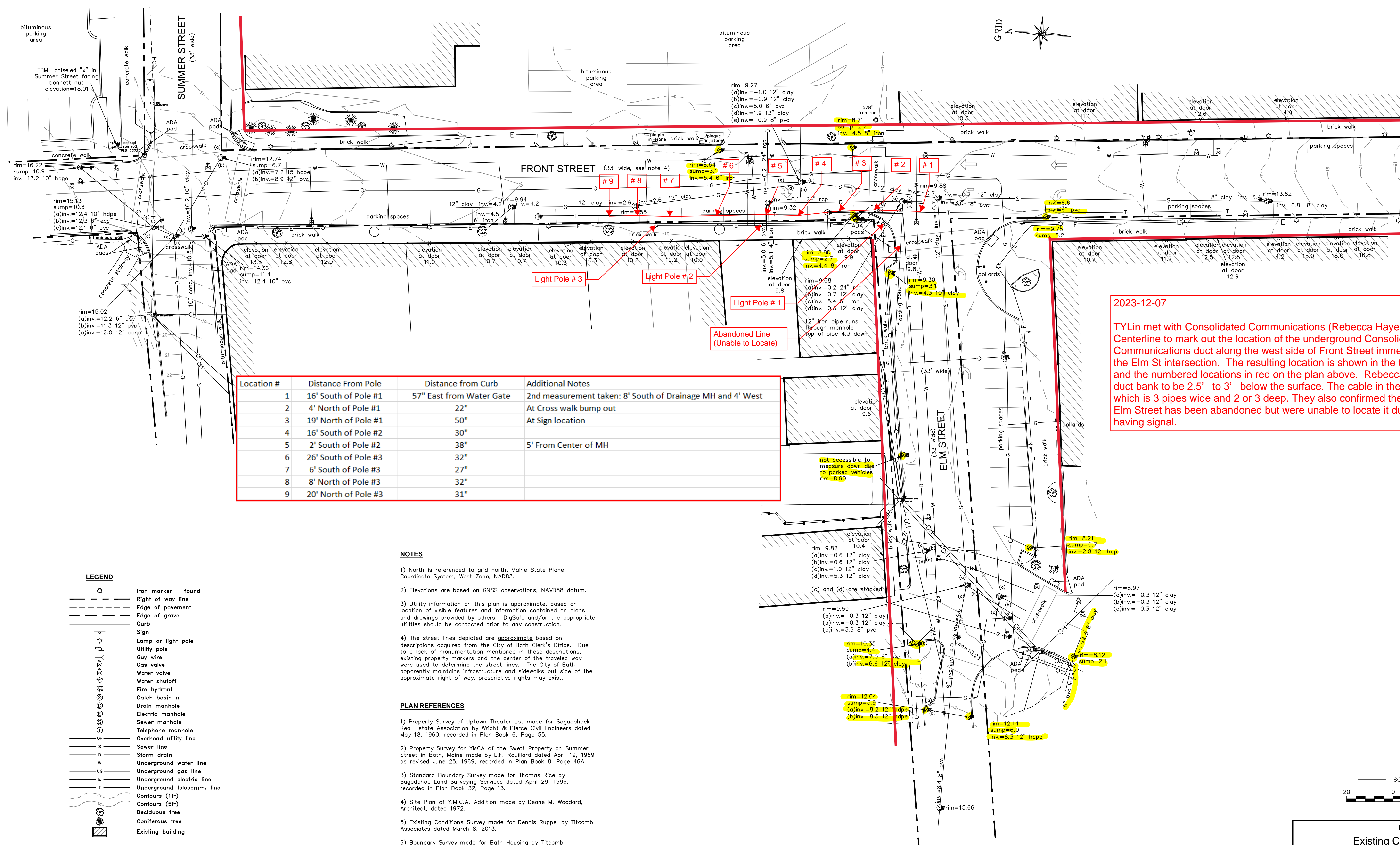
Response: On Sheet M100 – Materials Plan, notes for **Granite Curbing – Flush, Typ.** refer to detail 3 on Sheet C102 (**Flush Curb Typ.**). The curbing in this Flush Curb detail is paid for under **Pay Item 609.112.**

Question: Clarify that existing drainage pipe needs to be removed.

Response: The note on Demolition Plan (Sheet D100) indicating “*Rem. Exist. 8” Storm Drain*” shall be crossed out. Existing pipes shown with cross hatch symbol are not to be used in the future and will be filled with flowable fill. Payment for filling pipes with flowable fill will be incidental to the contract.



Consider these changes and information prior to submitting your bid on **October 24, 2024.**



Location #	Distance From Pole	Distance from Curb	Additional Notes
1	16' South of Pole #1	57" East from Water Gate	2nd measurement taken: 8' South of Drainage MH and 4' West
2	4' North of Pole #1	22"	At Cross walk bump out
3	19' North of Pole #1	50"	At Sign location
4	16' South of Pole #2	30"	
5	2' South of Pole #2	38"	5' From Center of MH
6	26' South of Pole #3	32"	
7	6' South of Pole #3	27"	
8	8' North of Pole #3	32"	
9	20' North of Pole #3	31"	

2023-12-07
 TYLin met with Consolidated Communications (Rebecca Hayes) and Centerline to mark out the location of the underground Consolidated Communications duct along the west side of Front Street immediately north of the Elm St intersection. The resulting location is shown in the table to the left and the numbered locations in red on the plan above. Rebecca estimated the duct bank to be 2.5' to 3' below the surface. The cable in the duct bank which is 3 pipes wide and 2 or 3 deep. They also confirmed the section on Elm Street has been abandoned but were unable to locate it due to it not having signal.

LEGEND

- Iron marker - found
- Right of way line
- Edge of pavement
- Edge of gravel
- Curb
- Sign
- ⊙ Lamp or light pole
- ⊙ Utility pole
- ⊙ Guy wire
- ⊙ Gas valve
- ⊙ Water valve
- ⊙ Water shutoff
- ⊙ Fire hydrant
- ⊙ Catch basin
- ⊙ Drain manhole
- ⊙ Electric manhole
- ⊙ Sewer manhole
- ⊙ Telephone manhole
- ⊙ Overhead utility line
- S Sewer line
- D Storm drain
- W Underground water line
- UG Underground gas line
- E Underground electric line
- T Underground telecomm. line
- Contours (1ft)
- Contours (5ft)
- ⊙ Deciduous tree
- ⊙ Coniferous tree
- Existing building

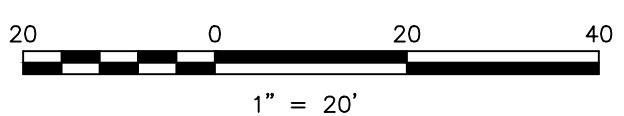
NOTES

- North is referenced to grid north, Maine State Plane Coordinate System, West Zone, NAD83.
- Elevations are based on GNSS observations, NAVD88 datum.
- Utility information on this plan is approximate, based on location of visible features and information contained on plans and drawings provided by others. DigSafe and/or the appropriate utilities should be contacted prior to any construction.
- The street lines depicted are approximate based on descriptions acquired from the City of Bath Clerk's Office. Due to a lack of monumentation mentioned in these descriptions, existing property markers and the center of the traveled way were used to determine the street lines. The City of Bath apparently maintains infrastructure and sidewalks out side of the approximate right of way, prescriptive rights may exist.

PLAN REFERENCES

- Property Survey of Uptown Theater Lot made for Sagadahoc Real Estate Association by Wright & Pierce Civil Engineers dated May 18, 1960, recorded in Plan Book 6, Page 55.
- Property Survey for YMCA of the Swett Property on Summer Street in Bath, Maine made by L.F. Rouillard dated April 19, 1969 as revised June 25, 1969, recorded in Plan Book 8, Page 46A.
- Standard Boundary Survey made for Thomas Rice by Sagadahoc Land Surveying Services dated April 29, 1996, recorded in Plan Book 32, Page 13.
- Site Plan of Y.M.C.A. Addition made by Deane M. Woodard, Architect, dated 1972.
- Existing Conditions Survey made for Dennis Ruppel by Titcomb Associates dated March 8, 2013.
- Boundary Survey made for Bath Housing by Titcomb Associates dated December 11, 2018.

PRELIMINARY



CERTIFICATION
 This survey conforms to the current standards of practice set forth by the Maine State Board of Licensure for Land Surveyors.

Rex J. Creteau, P.L.S. #2273

PLAN OF
 Existing Conditions Survey
 Front Street Bath, Maine

MADE FOR
 TJD&A

121 West Main Street Yarmouth, Maine

JOB #220066	DATE: September 22, 2020	SCALE: 1" = 20'
BOOK #927		
220066.dwg		

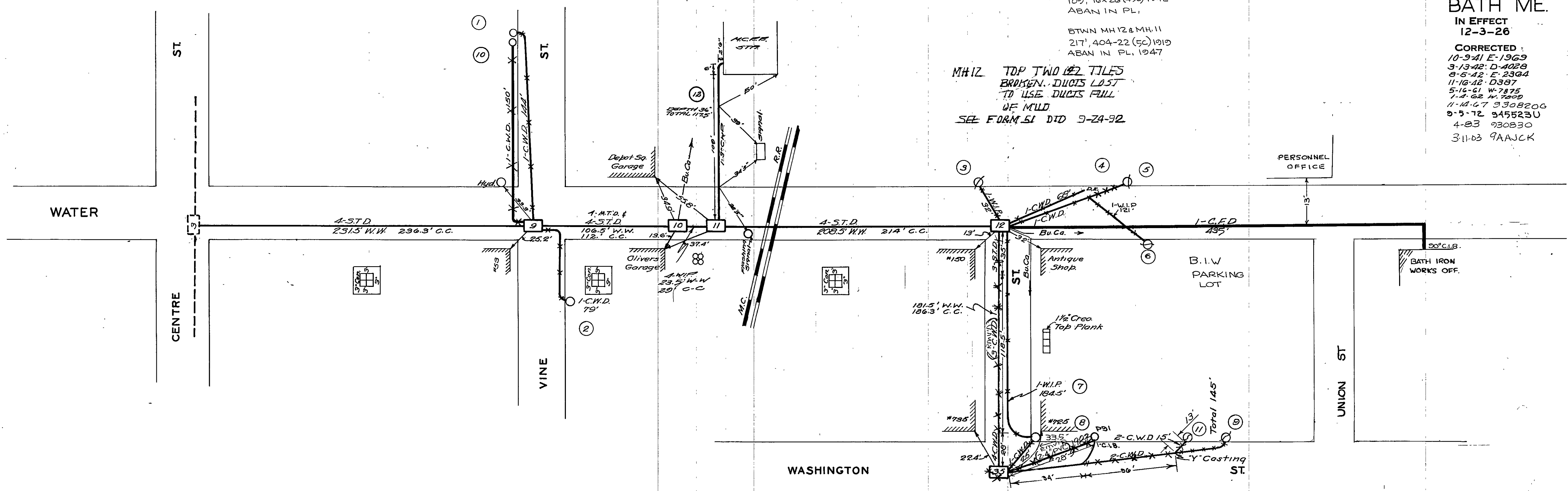
Titcomb Associates
 133 Gray Road, Falmouth, Maine 04105
 (207)797-9199 www.titcomb-survey.com

PREPARED BY: **CLH-W.K.M.**
 CHECKED BY: **CHL**

PRINTS FORWARDED				
CITY MAP	10-61	3-68	12-67	1-75
Bath Water Dist.	8-57	10-61	6/65	1-75
C.M.A.R.C.O.	10-61	6/65	12-67	1-75
WIRE CHISE	11-67	12-67		N.R.
CABLE DEPT.	12-67			1-75

WATER ST.
 FROM CENTRE ST.
 TO UNION ST.
KING ST.
 FROM WATER ST.
 TO WASHINGTON ST.
BATH ME.
 IN EFFECT
 12-3-26
 CORRECTED:
 10-3-41 E-1969
 3-13-42 D-4028
 8-5-42 E-2364
 11-16-42 D-387
 5-16-61 W-7875
 7-2-62 W-7809
 11-14-67 9308206
 9-5-72 9455230
 4-83 930830
 3-11-83 9AAJCK

NOTE: AT MH.12
 109', 16x26 (45c) 1942
 ABAN IN PL.
 BTWN MH.12 & MH.11
 217', 404-22 (5c) 1919
 ABAN IN PL. 1947
 MH.12 TOP TWO 62 TILES
 BROKEN. DUCTS LOST
 TO USE DUCTS FULL
 OF MILD
 SEE FORM 51 DTD 9-24-92



MANHOLES

GROUP NO.	M. H.	INSIDE DIMEN'S		MIN. OPENING	SHAPE	RECESS AT DUCTS	TOTAL DEPTH EXCAVTH.	WALLS	ROOF	FLOOR	OUTER COVER		INSIDE COVER	WT. FRAME	DRAIN	DATE	SPECIAL CONST.
		L.	W.								HD.	RM.					
1	9	5.5	3.5	3	Oval	2'-9"	5'	Con.	Con.	Dirt Rd.						1909	Repl. cover 1935 VIN. 70
1	10	5.5	3.5	3	Oval	3'-1"	5.4'	Con.	Con.	Dirt Rd.						1909	VIN. 70
1	11	5.5	3.5	3	Oval	2'-3"	5.4'	Con.	Con.	Dirt Rd.						1909	VIN. 70
1	12	5.5	3.5	3	Oval	5'-1"	5.4'	Con.	Con.	Dirt Rd.						1909	VIN. 70
2	35	5.5	6	4.5	Rect.	3"	6.4'	Br.	Br.	Dirt Rd.						1919	R.M. 110 2002 9AAJCK

MAIN CONDUIT

FROM M. H.	TO AND INCL. M. H.	ORIGINAL PAVE.			SUB SURFACE		DATE	REMARKS
		SURF.	BASE	LENGTH	TYPE	LENGTH		
3	9	Dirt		25.6'		1909		
9	10	Dirt		110'		1909	Enlarged 1958	
10	11	Dirt		29'		1909		
11	12	Dirt		214'		1909		
12	35	Dirt		186'		1919		

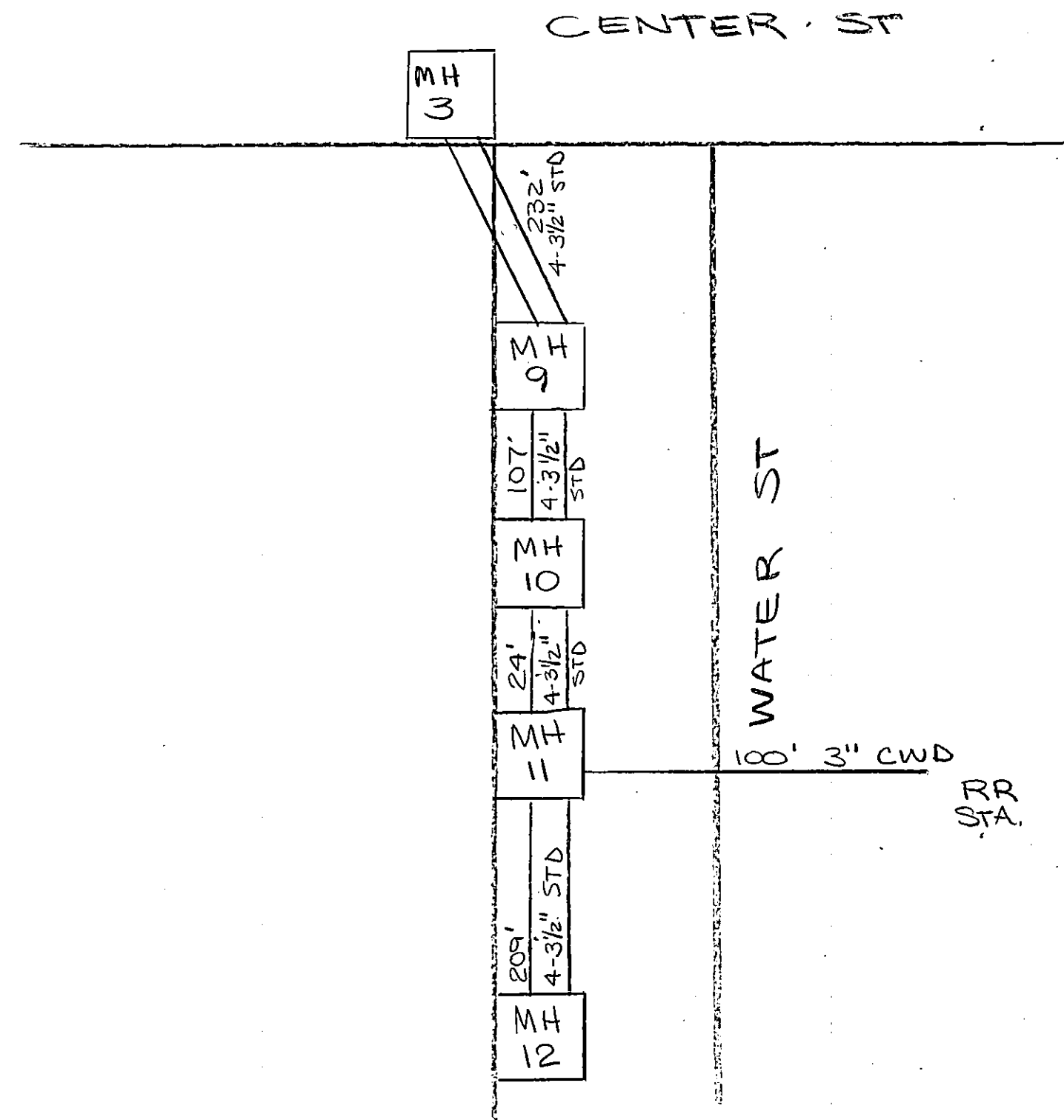
LATERALS

No.	ORIGINAL PAVE.			SUB SURFACE		DATE	REMARKS
	SURF.	BASE	LENGTH	TYPE	LENGTH		
1	Dirt		142'			1909	Aban. 1935
2	Dirt		65'			1909	Aban. 1935
3	Dirt		32'			1909	Retired
4							Aban. 1942
5							Retired
6	Dirt		121'			1909	Aban. 1942
7	Dirt		183'			1909	Retired
8	Dirt		23'			1919	Aban. 1937
9	Dirt		168'			1919	38' Aban. 1941
10			148'		148'	1935	No Date 1957
11	Mac. Rock		13'	Dirt	13'	1941	ABAN 1942
12	MAC. GRAY.		117.5'	FIN		1957	

No.	ORIGINAL PAVE.			SUB SURFACE		DATE	REMARKS
	SURF.	BASE	LENGTH	TYPE	LENGTH		

PREPARED BY.....
 CHECKED BY.....

2B			
IN EFFECT 6-00			
CORRECTED			
Order No.	Date Issued	Date Posted	By
298861	1998	6-00	DM



MAIN AND SUBSIDIARY CONDUIT

MAIN AND SUBSIDIARY CONDUIT

MANHOLES

FROM M.H.	TO M.H.	LENGTH	NUMBER OF DUCTS	FORMATION		TYPE AND MATERIAL	SIZE (IN.)	YEAR PLACED	PLACEMENT		REMARKS
				MAIN	SUB.				TRENCH	PLOWED	
3	9	232	4			STD	3.5				ABAN IN PL
9	10	107	4			STD	3.5				"
10	11	24	4			STD	3.5				"
11	12	209	4			STD	3.5				"
11	RR STA	100	1			CWD	3				"

FROM M.H.	TO M.H.	LENGTH	NUMBER OF DUCTS	FORMATION		TYPE AND MATERIAL	SIZE (IN.)	YEAR PLACED	PLACEMENT		REMARKS
				MAIN	SUB.				TRENCH	PLOWED	

M.H. IDENT.	INSIDE DIMENSIONS		VOL. CU. FT.	TYPE	PRECAST	CAST IN PLACE	COLLAR AND COVER	YEAR PLACED	REMARKS
	L.W.	HD. RM.							
9	55	35	3.5	BRICK					ABAN IN PL
10	55	35	3.5	BRICK					ABAN IN PL
11	55	35	3.5	BRICK					ABAN IN PL

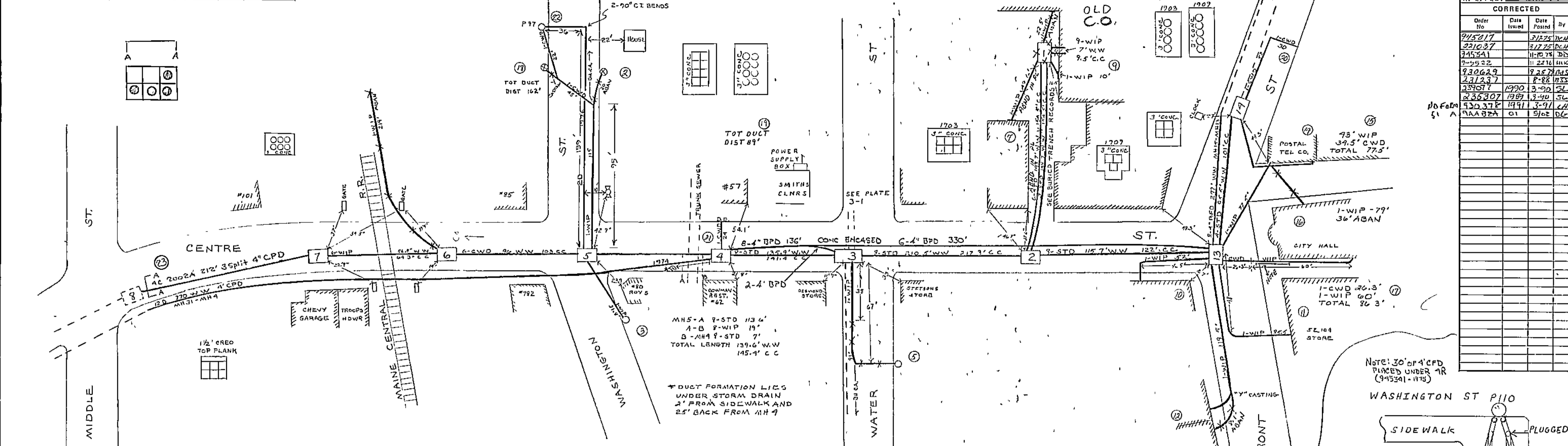
4C

PROPERTY OF NEW ENGLAND TELEPHONE & TELEGRAPH COMPANY	
LOCATION	WATER ST
EXCHANGE	BATH
EXCH. CODE	7311
(MASS. ONLY) MUNIC. CODE	

FORM 130-RF (6-73)

PREPARED BY: _____
 CHECKED BY: _____

DISTRIBUTION			
CITY MGR.			
WATER DIST.			
GAAP CO.			
CABLE DEPT.			



B.

IN EFFECT 3-17-75

CORRECTED

Order No	Date Issued	Date Posted	By
945217		3/27/75	DKH
945237		3/17/75	DKH
945341		11-10-75	DBS
945322		11-22-75	MLK
945629		9-25-75	DBS
231237		8-28-1933	
239077	1990	3-20-52	
235307	1989	3-20-56	
930378	1991	3-9-74	DKH
945322	01	5/02	DKH

NO. 51 A

M H	INSIDE DIMEN L x W HD. IN	M H OPEN ING	SHAPE	RECESS AT DUCTS	DEPTH OF EXCAV	WALLS	ROOF	FLOOR	COVER	DRAIN	DATE	REMARKS
7	2' x 3' 5" x 5"	27"	RECT	5' 5"	6' 9"	BR	CONC	CONC	RD	-	1909	ENLG 1929 REPAIR 1974 VOL 122.5
6	2' x 3' 5" x 5"	27"	RECT	4"	5'	REIN CONC	CONC	CONC	RD	-	1909	ENLG 1928 ENLG 1974 VOL 122.5
5	6' x 4' x 4.5"	24"	OVAL	6' 3"	6' 4"	CONC	CONC	DIRT	RD	-	1909	VOL 108'
4	6' x 13' x 7'	27"	RECT	4"	10'	REIN CONC	CONC	CONC	RD	SUMP	1974	VOL 504'
3	6' x 4' x 6"	30"	RECT	8"	9' 10"	BR	CONC	CONC	RD	SUMP	1955	VOL 270
2	9' x 6' x 5.5"	24"	OVAL	4' 3"	7'	BR	BR	DIRT	RD	-	1903	ENLG 1909 VOL 209
1	5' x 3' x 3.5"	24"	OVAL	4' 3"	5' 4"	CONC	CONC	DIRT	RD	-	1909	ABAN 235307 VOL 825'
13	9' x 4' x 6"	-	HEXAGON	-	-	BR	REIN CONC	CONC	RD	-	1909	REBUILT 1926 VOL 379
14	5' x 3' x 3.5"	24"	OVAL	4' 3"	5' 4"	CONC	CONC	DIRT	RD	-	1909	VOL 825'

FROM M H	TO M H	ORIGINAL SURF	PAVEMENT BASE	LENGTH	SUB SURF TYPE	LENGTH	DATE	REMARKS
5	4	DIRT		139.6'			1909	195' ABAN 1958
4	3	DIRT		135.9'			1909	
3	2	G.B.		211.5'			1909	
2	1	DIRT		110.2'			1909	ENLG 1928 ENLG 1974 VOL 122.5
1	0	DIRT		7'			1909	ENLG 1928 ENLG 1974 VOL 122.5
2	13	G.B.		115.7'			1909	
13	14	G.B.		95.5'			1909	
8	7	MAC GRV		212'	DIRT	212'	1928	RMV D 2002A
7	6	G.B.		42'	DIRT	42'	1928	
7	6	W PLANK		15'	DIRT	15'	1928	
6	5	G.B.		96'	DIRT	96'	1928	
31	4	MAC GRV		170'	C	170'	1974	
4	3	MAC GRV		136'			1989	239077
4	13	MAC GRV		330'			1989	239077

NO	ORIGINAL SURF	PAVEMENT BASE	LENGTH	SUB SURF TYPE	LENGTH	DATE	REMARKS
14	G.B.		71.5'			1909	OWULD B/ POSTAL TEL CO
2	DIRT		113'			1909	20' ABAN 1923
3	DIRT		222'			1909	91.5' ABAN 1939
4	G.B.		15'			1909	26'
4	DIRT		112.5'			1909	60' DIRT 86'
5	DIRT		211'			1909	53' ABAN 1939
7	DIRT		41.1'			1909	235307 ARND IN PL 1967
9	DIRT		5'			1909	235307 ARND IN PL 1967
10	BR.		7'			1909	
11	G.B.		32'			1909	
12	BR.		8'			1912	
13	G.B.		9'			1909	8.1' ABAN 1912
14	DIRT		112.5'			1909	
15	DIRT		32.5'			1928	
15	DIRT		42.5'			1928	
16	DIRT		48'			1909	30' ABAN 1928
17	G.B.		26'			1928	
18	MAC GRV		43'			1931	
18	DIRT		43'			1931	
19	OIL DIRT		49'			1939	
19	DIRT		49'			1939	
20	G.B.		82'			1947	
21	DIRT		24'			1947	
22	MAC GRV		22'			1958	
22	DIRT		22'			1958	
23	CONC		212'			2002	4" CPD 35 split

PROPERTY OF NEW ENGLAND TELEPHONE & TELEGRAPH COMPANY

LOCATION CENTRE ST

FROM MIDDLE ST TO FRONT ST

EXCHANGE BATH EXCH CODE 7311

MUNIC BATH

PREPARED BY CLH-WKM.
CHECKED BY CHL

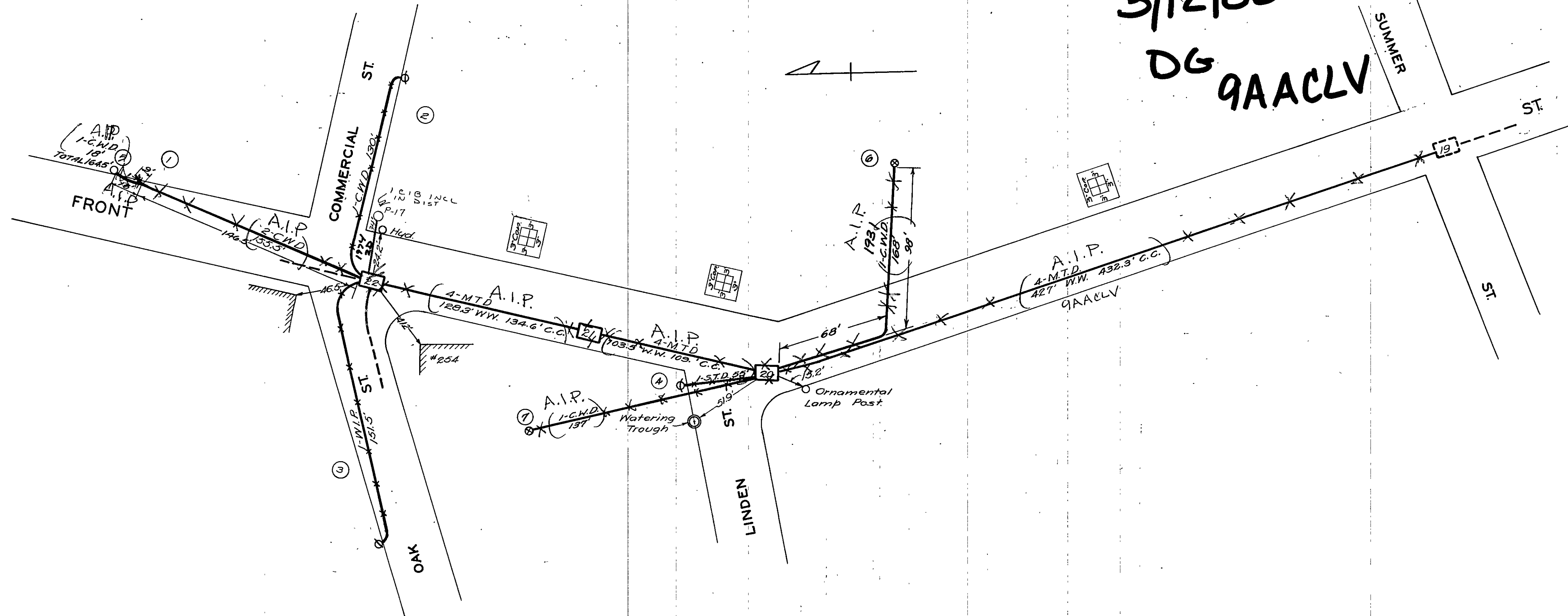
PRINTS FORWARDED		
City Map	3-65	1-75
Bath Water Dist	8-57	1-75
C.M.P. CO.		1-75
WIRE CHIEF	11-67	NR
CABLE DEPT		1-75

FRONT ST.
FROM OAK ST.
TO SUMMER ST.

BATH ME.

IN EFFECT
12-3-26
CORRECTED
1-29-31
9-28-31
7-16-34
4-2-36
9-30-74 945912

OBSOLETE
3/12/03
DG 9AACLV



MANHOLES

GROUP NO.	M. H.	INSIDE DIMEN'S L. W. HD. RM.	MIN. OPENING	SHAPE	RECESS AT DUCTS	TOTAL DEPTH EXCAVATION	WALLS	ROOF	FLOOR	OUTER COVER SHAPE	WT. INSIDE COVER	WT. FRAME	DRAIN	DATE	SPECIAL CONS'T.
A.I.P.	2	22	7'x4'x5'	24"	Oval	4'-3"	7'	Br.	Br.	Dirt Rd.				1909	
A.I.P.	1	21	5.5'x3.5'x4'	24"	Oval	4'-3"	6'	Con.	Con.	Dirt Rd.				1909	Size of M.H. Estimated
A.I.P.	1	20	5.5'x3.5'x3'	24"	Oval		5'	Con.	Con.	Dirt Rd.				1909	VOL. 60

MAIN CONDUIT

FROM M. H.	TO AND INCL. M. H.	ORIGINAL PAVE.			SUB SURFACE		DATE	REMARKS
		SURF.	BASE	LENGTH	TYPE	LENGTH		
22	21	Dirt		1348'			1909	A.I.P.
21	20	Dirt		109'			1909	A.I.P.
20	19	Dirt		431'			1909	A.I.P.

LATERALS

No.	ORIGINAL PAVE.			SUB SURFACE		DATE	REMARKS
	SURF.	BASE	LENGTH	TYPE	LENGTH		
1	Dirt		154'			1915	Aban. 1930 ALL
2	Dirt		128'			1915	Aban. 1935
3	Dirt		145'			1915	Aban. 1933
4	Dirt		53'			1909	Aban. 1933
5	Dirt		16'			1930	A.I.P.
6	CONC.			DIRT	166'	1931	A.I.P.
7	DIRT	DIRT	135'	DIRT	135'	1931	A.I.P.

No.	ORIGINAL PAVE.			SUB SURFACE		DATE	REMARKS
	SURF.	BASE	LENGTH	TYPE	LENGTH		

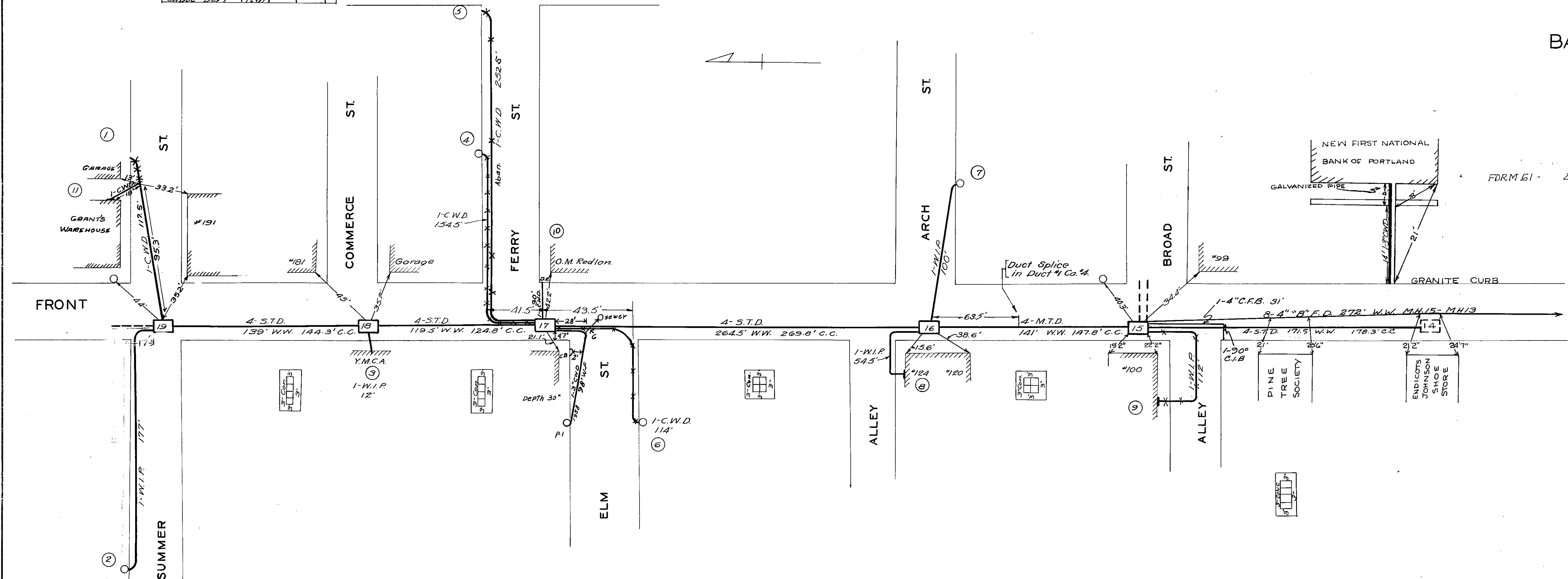
PREPARED BY CLH-WKM.
CHECKED BY CHL

PRINTS FORWARDED			
CITY MAP	10-61	3-65	1247
Bath Water Dist	B-57	1/61	6/65 1247
S.M.P.C.A.	10-61	6/65	1247
WIRE CHIEF	11-67	1247	
CABLE DEPT	1247		

FRONT ST.
FROM SUMMER ST.
TO M.H. 14

BATH ME.
IN EFFECT
12-3-26
CORRECTED
3-30-36
2-5-48 P-5071
5-19-48 P-7161
5-19-54 D-7997
5-16-61 W-7998
1-3-62 P-2-316
9-26-62 P-2-6219
11-17-61 0456870

FORM 61- 235307 12-16-31



MANHOLES

GROUP NO.	M. H.	INSIDE DIMEN'S L. W.-HD. RM.	MIN. OPENING	SHAPE	RECESS AT DUCTS	TOTAL DEPTH EXCAVATION	WALLS	ROOF	FLOOR	OUTER COVER SHAPE	WT. INSIDE COVER	WT. FRAME	DRAIN	DATE	SPECIAL CONST.
1	19	5x3.5x3.5	24"	Oval	(1-3)	5'	Con.	Con.	Dirt Rd.					1909	
1	18	5.5x3.5x3	24"	Oval	(2-4)	4.9'	Con.	Con.	Dirt Rd.					1909	
1	17	5x3x3.5	24"	Oval	(2-)	5.4'	Br.	Br.	Dirt Rd.					1909	
1	16	5.5x3.5x3	24"	Oval	(2-2)	4.9'	Con.	Con.	Dirt Rd.					1909	
3	15	8x7.5x3.5	24"	Oval	(12-18)	5.4'	Br.	Br.	Dirt Rd.						REBUILT 1966
L	15	9x7x6		HEXAGON			Be.	REIN. CONC.	CONC.					1909	

MAIN CONDUIT

FROM M. H.	TO AND INCL. M. H.	ORIGINAL PAVE. SURF.	BASE	LENGTH	SUB SURFACE TYPE	LENGTH	DATE	REMARKS
19	18	G.B.		145'			1909	
18	17	G.B.		124'			1909	
17	16	G.B.		270'			1909	
16	15	G.B.		147'			1909	
15	14	G.B.		178'			1909	

LATERALS

No.	ORIGINAL PAVE. SURF.	BASE	LENGTH	SUB SURFACE TYPE	LENGTH	DATE	REMARKS
1	G.B.		31'			1909	20.2' aban. 1948
	Dirt		85'				
2	Dirt		166'			1909	
	G.B.		9'				
3	Con.		6'			1909	
	G.B.		6'				
4	G.B.		31'				
	Dirt		122'			1909	RM. 1900
5	G.B.		31'			1909	Aban. 1954
	Dirt		222'				
6	G.B.		15'			1909	Aban. 1958
	Dirt		97'				
7	Dirt		59'			1909	
	G.B.		39'				
8	Dirt		24'			1909	
	G.B.		20'				

No.	ORIGINAL PAVE. SURF.	BASE	LENGTH	SUB SURFACE TYPE	LENGTH	DATE	REMARKS
9	G.B.		20'			1909	REBUILT 112'
	Con.		8'				1931
	Dirt		58'				EST 235 307
10	G.B.		30'			1947	
11	No Data		Available		16'	1948	
12							